

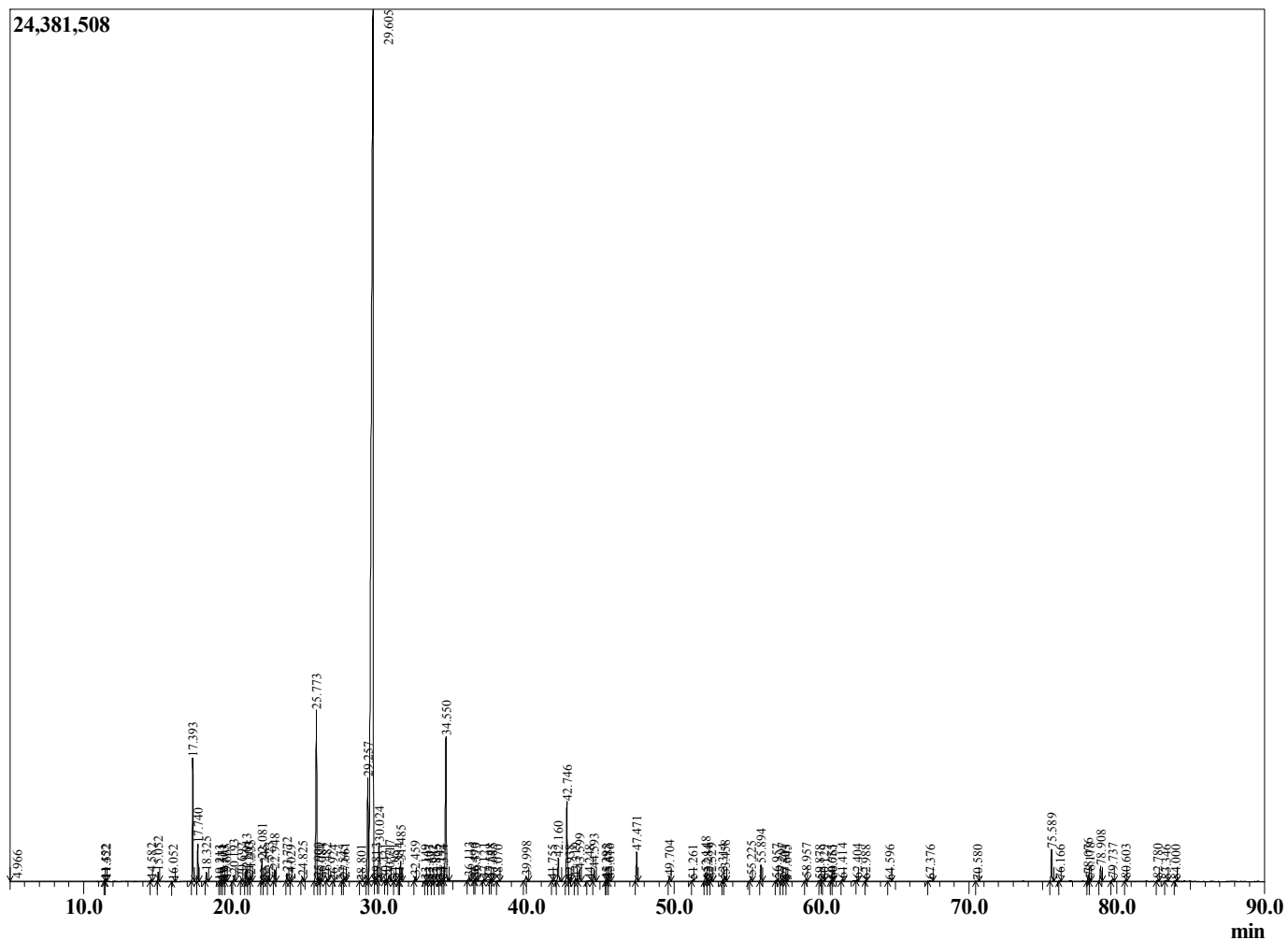
Sample Information

Sample Type : Essential Oil
 Sample Name : Citrus hystrix

Combava Petitgrain
 Lot# MAK11-KT
 Country: Madagascar



Chromatogram Citrus hystrix



R.Time	Name	Area%
4.966	Methylcyclopentane	0.01
11.452	cis-1-Isopropyl-3-methylcyclopentane	0.02
11.522	trans-1-Isopropyl-3-methylcyclopentane	0.03
14.582	alpha-Thujene	0.06
15.052	alpha-Pinene	0.23
16.052	Camphene	0.01
17.393	Sabinene	3.34
17.740	beta-Pinene	1.01
18.325	Myrcene	0.27
19.213	Octanal	0.01
19.371	Unidentified	0.01
19.503	alpha-Phellandrene	0.02
19.665	delta-3-Carene	0.04
20.193	alpha-Terpinene	0.18
20.692	para-Cymene	0.08
21.013	Limonene	0.35
21.203	Unidentified	0.14
21.335	Unidentified	0.19
22.081	trans-beta-Ocimene	0.63
22.245	Unidentified	0.02
22.523	2,6-Dimethyl-5-heptanal (melonal)	0.10
22.948	gamma-Terpinene	0.34
23.772	cis-Linalool oxide (furanoid)	0.25
24.029	Unidentified	0.02
24.825	Terpinolene	0.18
25.773	Linalool	5.84
25.900	cis-Sabinene hydrate	0.09
26.084	Nonanal	0.03
26.482	cis-Rose oxide	0.08
26.924	Unidentified	0.01
27.545	cis-para-Menth-2-en-1-ol	0.02
27.661	Citronellol	0.12
28.801	trans-para-Menth-2-en-1-ol	0.02
29.257	Neoisopulegol	3.55
29.605	Citronellal	62.91
29.813	Menthone	0.04
30.024	Isopulegol	1.71
30.431	Isomenthol	0.02
30.717	Isoisopulegol	0.23
31.051	Unidentified	0.03
31.384	Neoisopulegol	0.04
31.485	Terpinen-4-ol	0.63
32.459	alpha-Terpineol	0.14
33.149	Decanal	0.01
33.407	cis-Piperitol	0.01
33.642	Unidentified	0.01
33.865	Unidentified	0.01
34.142	Levocitriole	0.03
34.374	Nerol	0.02
34.550	Citronellol	5.28
36.113	Geraniol	0.12
36.490	Citronellal epoxide isomer	0.03
36.573	Citronellal epoxide	0.06
37.121	Unidentified	0.03
37.548	Unidentified	0.02
37.685	Citronellyl formate	0.04

R.Time	Name	Area%
38.070	Unidentified	0.02
39.998	Citronellic acid	0.24
41.755	delta-Elemene	0.02
42.160	Citriodiol	0.83
42.746	Citronellyl acetate	2.61
42.938	Eugenol	0.03
43.319	Neryl acetate	0.07
43.599	Citriodiol isomer	0.38
44.248	Citriodiol isomer	0.03
44.593	Geranyl acetate	0.47
45.395	beta-Cubebene	0.02
45.483	beta-Elemene	0.07
45.616	Unidentified	0.05
47.471	beta-Caryophyllene	1.02
49.704	alpha-Humulene	0.18
51.261	Germacrene D	0.02
52.148	Bicyclogermacrene	0.31
52.284	alpha-Murolene	0.04
52.529	(E,E)-alpha-Farnesene	0.08
53.314	Unidentified	0.04
53.458	delta-Cadinene	0.20
55.225	Elemol	0.15
55.894	trans-Nerolidol	0.57
56.957	Spathulenol	0.05
57.297	Caryophyllene oxide	0.11
57.503	Globulol	0.04
57.645	Unidentified	0.02
58.957	Unidentified	0.08
59.878	1-epi-Cubenol	0.02
60.129	10-epi-gamma-Eudesmol	0.03
60.655	tau-Cadinol	0.02
60.761	epi-alpha-Cadinol	0.04
61.414	alpha-Cadinol	0.07
62.404	Patchouli alcohol	0.03
62.988	2,3-Dihydro-6-trans-farnesol	0.02
64.596	Unidentified	0.02
67.376	Benzyl benzoate	0.03
70.580	Citriodiol acetal I	0.02
75.589	Citriodiol acetal II	1.18
76.166	Citriodiol acetal III	0.02
78.076	Citriodiol acetal IV	0.25
78.178	Citriodiol acetal V	0.07
78.908	Unidentified	0.53
79.737	Unidentified	0.11
80.603	Unidentified	0.05
82.780	Unidentified	0.05
83.346	Unidentified	0.04
84.000	Phytol	0.03
104.329	Unidentified isomer 1	0.06
104.496	Unidentified isomer 1	0.04
104.762	Unidentified isomer 1	0.05
107.586	Unidentified	0.80
		100.00